



NSMHPCN  
North Simcoe Muskoka Hospice Palliative Care Network

# NSMHPCN CLINICAL CONFERENCE

## Providing Palliative Care in a

# Diverse World

# MAY 28 2024

Together we will embark on a journey to explore and address the complexities of delivering palliative care in a diverse world.

### Topics of Discussion

*Palliative Care and Severe Mental Illness*

*Palliative Care and Sexual and Gender Minorities*

*Palliative Care and Intellectual and Developmental Disabilities*

*Palliative Care and the Vulnerably Housed*

For the full itinerary and speaker information, please scan the QR Code or visit:

**NSMHPCN.CA/CC24**



**North Simcoe Muskoka Hospice Palliative Care Network**

1-877-235-2224   705-325-0505

169 Front St. S., Orillia   <https://nsmhpcn.ca>





NSMHPCN  
North Simcoe Muskoka Hospice Palliative Care Network

# NSMHPCN CLINICAL CONFERENCE

## Providing Palliative Care in a

# Diverse World

WELCOME

We appreciate you being here today! Embracing our commitment to environmental responsibility as a caring community-oriented company, we've chosen to adopt eco-friendly practices for this occasion. Rather than distributing physical copies of our conference materials, you can access all the necessary resources by either scanning the QR Code located in the bottom left-hand corner of this page or visiting <https://nsmhpcn.ca/cc24>. Our decision to go green has spared more than 2,000 sheets of paper from being used today!

### Agenda

- 8:30 am Registration Opens
- 9:00 am **Opening Ceremony**  
Troy Monague
- 9:30 am **Palliative Care and Severe Mental Illness**  
Chantal Byrnes Leadbeater and Laura Naumann
- 10:45 am Break
- 11:00 am **Palliative Care and Intellectual and Developmental Disabilities**  
Angie Gonzales, Janet Elder and Tracey Human
- 12:00 pm Lunch
- 12:45 pm **Palliative Care and the Vulnerably Housed**  
Ron Easton
- 13:45 pm Break
- 14:00 pm **Palliative Care and Sexual and Gender Minorities**  
Evan McCraney
- 15:00 pm **Special Guest**  
Andrea Murray
- 15:30 pm **Closing Ceremony**  
Troy Monague



# NSMHPCN CLINICAL CONFERENCE



GUEST SPEAKERS

## **Troy Monague**

**Traditional Healing Coordinator, Mamaway Wiidokdaadwin Team**



Troy Monague is a part of the Mamaway Wiidokadaadwin Team as the Traditional Healing Coordinator with the goal of helping communities with access and exposure to their culture and strengthening of their identity.

Troy has worked in the community for many years with Mental Health, Crisis Intervention, Addictions and those populations with complex needs, targeted through an Indigenous lens of practice.

Troy has been working in the community while seeking ongoing learning from different elders, knowledge keepers and helpers. Troy learns from his loving family everyday as he is a husband and father. Troy was raised on Beausoleil First Nation with people such as his Grandfather, Past Chief Rodney Monague Sr, who helped in moving Troy in the direction of keeping the history of Anishinaabe people of this area and striving for the youth today to find independence and pride through storytelling and the use of what traditional knowledge Troy can offer.

## **Chantal Byrnes Leadbeater, RN**

**Clinical Educator for the Horizon Program for Geriatric Psychiatry, Waypoint Centre for Mental Health Care**



Chantal Byrnes Leadbeater is the Clinical Educator for the Horizon Program for Geriatric Psychiatry at Waypoint Centre for Mental Health Care. She began her career as a Registered Practical Nurse in 2015 before returning to obtain her Registered Nurse designation in 2021. She has worked in a wide variety of settings including emergency care, geriatrics, acute and forensic psychiatry.

Chantal has been involved with several organizational education initiatives within Waypoint, including Reviving the Palliative Care Committee, encouraging and educating on palliative approaches to care, working to strengthen collaborative relationships with external partners including NSMHPCN.

## **Laura Naumann, RN**

**Clinical Orientation and Preceptor Leader, Waypoint Centre for Mental Health Care**



Laura Naumann is the Clinical Orientation and Preceptor Leader at Waypoint Centre for Mental Health Care. She has been a Registered Nurse since 2017, starting her career in acute psychiatry, moving into concurrent disorders treatment prior to leaving her patient-facing position to support newly hired staff in onboarding to Waypoint. She has been involved with several educational initiatives within Waypoint, including work to provide an Equity, Diversity and Inclusion Resource Toolkit to each unit, in collaboration with the Director of Equity, Diversity, Inclusion and Collaborative Learning.

Laura is currently developing a Preceptor Mode to support newly hired staff, and continues to explore ways to provide educational experiences for staff that positively impact patient care.

# NSMHPCN CLINICAL CONFERENCE



GUEST SPEAKERS

## **Angie Gonzales, RN, MN**

**Clinical Nurse Specialist, Nurse Professional Practice Lead Adult Program, Surrey Place**



Angie is a Nurse Professional Practice Lead and Clinical Nurse Specialist at Surrey Place. She has Bachelor of Science Honours degree in Life Sciences, Bachelor of Nursing Science and Master of Nursing degree in Community Health from the University of Toronto. Prior to Surrey Place, Angie worked at Holland Bloorview Kids Rehab Hospital in Acquired Brain Injury inpatient unit and Neuromuscular outpatient clinic. She now provides nursing consultation care with Surrey Place's Plus 45 clinical team. She is part of ECHO Ontario Adult Intellectual & Developmental (AIDD) Disabilities

program. Angie is part of the IDD Provincial Intellectual and Developmental Disability Palliative Care Network (IDDPCN).

## **Janet Elder BScN, RN CHPCN(C)**

**Palliative Pain & Symptom Management Consultant/Educator (PPSMC) for Windsor/Essex**



Janet is a graduate of the University of Windsor with a Bachelor's of science in Nursing. She has held her Palliative Care certification since 2006. Over 30 years experience working and developing her knowledge in Hospice Palliative Care. She has applied her knowledge and passion to positively impact the illness experience for patients, families and care teams.

Janet has been in her present role since 2019 as the Palliative Pain & Symptom Management Consultant/Educator (PPSMC) for Windsor/Essex through the Palliative Pain & Symptom Management Consultation Program for SW. Previously she worked at the Hospice of Windsor and held a number of roles including the role of the Palliative Liaison Nurse. Currently the Co-chair of the Provincial Intellectual and Developmental Disability Palliative Care Network (IDD-PCN); chair of the provincial Palliative Care Consultation Network (PCCN); chair of the Windsor/Essex Hospice Palliative Care Committee; Non-Physician Clinical Co-lead (CLL) for OH West and previous member of the Palliative Care Health Services Delivery Framework Working Group.

## **Tracey Human, RN CHPCN(C)**

**Palliative Care | Pain & Symptom Management Consultation (PPSMC) | Toronto Service**



Tracey Human is an ardent proponent of transformative healthcare rooted in knowledge-to-action and applied empathy to positively impact the illness experience for individuals, families, and care teams. She has served in various communities of practice in front line and leadership roles, high acuity acute care to community-based palliative care, for over 40 years capacity building grassroots to system level and considers it a tremendous privilege.

Tracey has been in her present role 15 years as Director of the Palliative Care, Pain & Symptom Management Consultation Service (PPSMC) for Toronto; currently is Chair of the provincial Intellectual and Developmental Disability Palliative Care Committee (IDD-PCC); member of the Ontario Health/Cancer Care Ontario, Hospital Model of Care working group; member of the Ontario Palliative Care Network (OPCN) Clinical Advisory Council; past Chair of the provincial Palliative Care Consultation Network (PCCN); past Member of the Toronto Central Hospice Palliative Care Network Board of Directors; and has served on the Ryerson University Advisory Council to the Health Services & Health Information Management Programs.

# NSMHPCN CLINICAL CONFERENCE



## GUEST SPEAKERS

### **Ron Easton, BSc**

*Transitional Support Worker, The Lighthouse*



After 13 years as an elementary school teacher, a life-changing opportunity to begin providing foster care nearly fifteen years ago developed a passion for helping those living with vulnerability in our community. He made the financially astute move into developmental services and eventually into working at The Lighthouse, Orillia's homeless shelter and community services hub. After 6 years there, serving in various roles, his life focus is boiling down to "Comfort the afflicted, and afflict the comfortable".

He and his wife, Sabrina just had their 20th anniversary and are parents of 4 kids, 3 still at home. In his spare time, he likes to read, write, watch birds, enjoy his kids and geek out over baseball. He can be reached at [ron@orillialighthouse.ca](mailto:ron@orillialighthouse.ca)

### **Evan McCraney**

*Seniors Program Coordinator, Gilbert Centre*



Evan McCraney is a queer trans man living in Muskoka. He works at Gilbert Centre as the Seniors Program Coordinator, and creates programming and resources for 2SLGBTQ+ under the banner of and in partnership with the New Horizons for 2S-LGBTQ+ Older Adults program. He can be reached at [EvanM@GilbertCentre.ca](mailto:EvanM@GilbertCentre.ca)

### **Andrea Murray**



Andrea has quickly gained a reputation as being 'a must see' and has left audiences all across Ontario wanting more from this feisty, funny gem. Andrea received rave reviews as an MC for BarrieFolk, Mariposa Folk Festival, Owen Sound's Summerfolk, International Women's Day, Barrie Arts Awards and the Georgian's Got Talent show.

Andrea was a cast member of the Vagina Monologues in 2012 the first-ever sold out production for the Five Points Theatre. Andrea is also a regular performer for the Barrie International Comedy Festival alongside Colin Mochrie, Andrea Martin and Sandra Shamas. In 2014, Andrea debuted her first one-woman show Not So Local at the Mady Centre for the second annual Barrie International Comedy Festival.

During Covid, Andrea launched for Comedy from the Couch tour and performed for various audiences including Central Ontario United Church Ministers (yes, ministers), the Barrie Women's Shelter and the Professional Business Women of Simcoe County.

As a speaker and retreat leader, her subject matter ranges from sparking your creativity, grief recovery, well-being and mindfulness. Andrea was a proud union steward and is actively involved in numerous community and arts groups advancing such causes labour movement and women's rights.

# NSMHPCN CLINICAL CONFERENCE



EDUCATIONAL OPPORTUNITIES

The North Simcoe Muskoka Hospice Palliative Care Network is committed to the development of quality hospice palliative care wherever the client chooses to live and die. To support health care providers, we offer a variety of conferences, courses, workshops and presentations in communities across North Simcoe Muskoka.

## Fundamentals of Hospice Palliative Care (FHPC)

Fundamentals of Hospice Palliative Care program is a highly interactive, introductory course for all healthcare providers, support workers, and volunteers interested in enhancing their knowledge of Hospice Palliative Care.  
Duration: Approximately 9 weeks



## Advance Palliative Practice Skills (APPS)

Building on the Fundamentals of Hospice Palliative Care Program, The Advanced Palliative Practice Skills (APPS) program is an interactive, educational opportunity for Personal Support Workers (PSWs), Health Care Aides and Hospice Volunteers who are graduates of the Core Fundamentals of Hospice Palliative Care Program.  
Duration: Approximately 9 weeks



## Comprehensive Advanced Palliative Care Education (CAPCE)

The CAPCE program is uniquely designed for nurses (RPN, RN, NP) to develop their leadership and expertise skills in hospice palliative care across all healthcare sectors.  
Duration: Approximately 5 months



For more information on the programs listed above please contact:

Lori Gill  
Education Specialist  
(705) 325-0505 ext 221 lori@nsmhpcn.ca

# NSMHPCN CLINICAL CONFERENCE



## Palliative Care ECHO Project

EDUCATIONAL OPPORTUNITIES



### Evidence-Based Palliative Symptom Assessment and Management

Excellent Palliative symptom assessment and ongoing management are based on the acuity, complexity and variability of the person's condition. The use of standardized and evidence based tools promote this excellence in practice.

Please join as we revisit Cancer Care Ontario Symptom Management Algorithms. This review will assist you to identify and manage palliative symptoms, alleviate suffering and improve quality of life for your palliative patients/clients.



To view previous sessions in our ECHO series, please visit <https://nsmhpcn.ca/ECHO>

#### UPCOMING SESSIONS

**Thursdays**  
**1:00 PM - 2:00 PM**

June 27th, 2024  
Constipation & Diarrhea

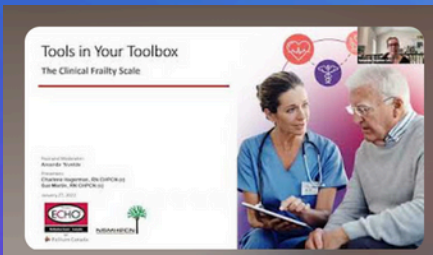
September 26th, 2024  
Dyspnea

**Register online:**  
<https://nsmhpcn.ca/echo>



## Catch up on YouTube

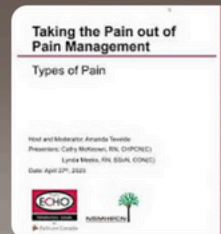
You can now catch up on our past ECHO series through the playlists listed below. Each series can be viewed in its entirety by visiting the links listed or by scanning the QR Codes provided.



**ECHO Tools in Your Toolbox**



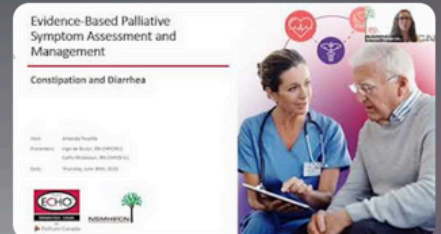
<https://bit.ly/ECHOTools>



**ECHO Taking the Pain out of Pain Management: One Step...**



<https://bit.ly/ECHOPain>



**ECHO Evidence-Based Palliative Symptom...**



<https://bit.ly/ECHOSymptom>

# NSMHPCN CLINICAL CONFERENCE



ADDITIONAL RESOURCES

## NSMHPCN DIGITAL RESOURCE BINDER

**Hospice Palliative Care resources at your finger tips!**

[HTTPS://NSMHPCN.CA/RESOURCES/VIRTUAL-RESOURCE-PACKAGE](https://NSMHPCN.CA/RESOURCES/VIRTUAL-RESOURCE-PACKAGE)



We are pleased to share the NSMHPCN Virtual Resource Binder which includes a wealth of resources for all staff of any discipline providing palliative, or end-of-life care, to residents and families in NSM. This includes links to gold standard assessment tools and client/family handouts, regardless of where you work in NSM (Retirement and Long-Term Care Homes and acute care, and community) you have access to these resources and to the services of the Palliative Pain and Symptom Management Consultants (PPSMC's) with the NSMHPCN.

The dedicated team of PPSMC's have carefully curated the resources for you as a Hospice Palliative Care Provider.

## Resource Library for Patients, Family Members and Caregivers

[HTTPS://NSMHPCN.CA/PATIENT-FAMILY-CAREGIVERS/](https://NSMHPCN.CA/PATIENT-FAMILY-CAREGIVERS/)

- Advance Care Planning
- Hospice Directory
- Illness Specific Resources
- Palliative Care Myth Busting
- Supporting Children
- Resources for Following Death



## Grief & Bereavement Resource Collection

[HTTPS://NSMHPCN.CA/GRIEF-BEREAVEMENT/](https://NSMHPCN.CA/GRIEF-BEREAVEMENT/)

Resources tailored to:

- Children's Grief
- Healthcare Workers
- Mental Health Resources
- Patients & Families
- Pregnancy and Infant Loss
- Plus Educational Resources



## BEYOND THE STETHOSCOPE

A PODCAST FOCUSED ON HOSPICE PALLIATIVE CARE



Beyond the Stethoscope welcomes special guests as we lead thought-provoking discussions.

[HTTPS://NSMHPCN.CA/BEYOND-THE-STETHOSCOPE/](https://NSMHPCN.CA/BEYOND-THE-STETHOSCOPE/)







NSMHPCN  
North Simcoe Muskoka Hospice Palliative Care Network

# NSMHPCN CLINICAL CONFERENCE

## Providing Palliative Care in a

# Diverse World

COMMUNITY PARTNERS

