



nsmhpcn.ca

2016-2017 ANNUAL REPORT

BOARD *of* DIRECTORS



The NSMHPCN Board of Directors represents a wide range of professions, skills and groups in the community.



BRUCE BOUND
CPA, CA
Board Chair

THERESA MORLEY
CPA, CA
Treasurer/Secretary



DEBORAH DUNCAN-RANDAL
RN
Vice Chair

SONJA FREE
MDiv.,MSW



DR.DON ATKINSON
MD,MMM,CPE

RYAN WALSH
Hon.BHSc.



NANCY ROXBOROUGH
RSW

WHO *we* ARE



MISSION

The North Simcoe Muskoka Hospice Palliative Care Network (NSMHPCN) is an alliance of health care providers, volunteers, and consumers who facilitate the planning and development of quality palliative care, to the residents of our communities through the provision of:

- a broad system design for palliative care
- coordination and integration of palliative care services at a systems level
- monitoring and assessment of community needs
- promotion of service innovations
- palliative care service, education and research

Quality palliative care is available across North Simcoe Muskoka to every person living with life-threatening illness.

VISION

VALUES

Respect: We value every person's right to make choices that are suitable for them.

Collaboration: We promote agencies and communities working together to provide optimum care and service.

Equitability: We strive to recognize diversity and personal choice in order to make services and supports accessible to all people.

Integrity: We will honour our commitments by demonstrating respectful behaviour, open communication, professionalism and accountability.

KEY HIGHLIGHTS

Pediatric Program

Pediatric Palliative Care interest group is now meeting quarterly. A pediatric bed is available at Hospice Simcoe, and pediatric clinics at Royal Victoria Hospital (Barrie) and Orillia Soldier's Memorial Hospital (Orillia) have been happening with ongoing support from the Hospital for Sick Children (Toronto). Plans are underway to develop a newsletter to help support staff, parents and families of children experiencing cancer.



INTEGRATE

Integrate, the program initiated by Cancer Care Ontario and the Partnership Against Cancer is completed, the basic process is still in effect with early identification asking the surprise question and linking into the community with service and support with a palliative approach to care



Long-Term Care

Continuing to increase capacity of Long-Term Care facilities to provide a palliative approach to care for their residents through education and support, including 24/7 on call staff support.



First Nation, Inuit & Metis

Continued to strengthen partnerships with all four First Nation communities in our LHIN and with Aboriginal Health Care Partners, including the Aboriginal Health Circle and the Aboriginal Patient Navigation Program through RVH.



Health Care Consent & Advance Care Planning

Worked with Provincial Community of Practice to ensure that educational materials and documentation are consistent with the legal provincial framework.



Bereavement

Provided standardized training and education around bereavement, grief, and loss across a variety of care settings, including the community and within the corrections system.



Pain & Symptom Management

Our Hospice Palliative Care Nurse Consultants Received 1,243 referrals, and provided 3,478 individual face-to-face consultations .



EDUCATION

Conferences

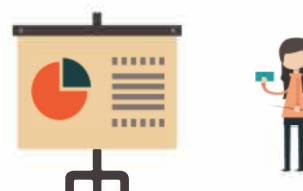


**3 Conferences
365 Attendees**

TOPICS INCLUDED:

Trauma Informed Care at End-of-Life;
Health Care Consent & Advance Care Planning;
Integrated Palliative Care Program: Improving Hospice referrals
EOL Care with Indigenous Families;
Organ Donation;
HPC with the Vulnerably Housed & Homeless;
Canadian Virtual Hospice;
Spiritual Companionship;

Presentations & Workshops



Over 525 Participants

TOPICS INCLUDED:

Pills, Pumps & Patches; The Pharmacologic Management of Pain in Palliative Patients
Advance Care Planning;
Palliative Care for the Dementia Journey;
Medical Assistance in Dying (MAID);
Grief and Loss;
Palliative Sedation;
A Guide to Difficult Conversations: The Art of Language

Bereavement Facilitation Training

6 Classes
57 Participants

Advanced Palliative Care Education (ACE)

3 Classes
27 Graduates

Courses



Learning Essential Approaches to Palliative Care (LEAP)

7 Classes
135 Participants

The Fundamentals of Hospice Palliative Care

14 Classes
126 Graduates

North Simcoe Muskoka Hospice Palliative Care Network Statement of Financial Position

For the year ended March 31	2017	2016
Assets		
Current		
Cash (Note 2)	\$ 235,083	\$ 185,968
Accounts receivable	15,094	25,315
Short-term investments	341,151	288,668
HST receivable	31,477	10,264
Prepaid expenses	22,487	17,036
	645,292	551,375
Capital assets (Note 4)	384	1,153
Long term investments	-	100,000
	\$ 645,676	\$ 652,528
Liabilities and Net Assets		
Current		
Accounts payable and accrued liabilities	\$ 122,912	\$ 173,902
Deferred revenue - residential hospice	41,704	76,684
Deferred revenue	6,485	6,924
	171,101	257,510
Deferred contributions related to capital assets (Note 7)	384	1,152
	\$ 171,485	\$ 258,662
Commitment (Note 8)		
Net Assets		
Unrestricted - Palliative Care Network	\$ 332,579	\$ 264,213
Unrestricted - Hospice Orillia	141,612	129,653
Internally restricted - Hospice Orillia	-	-
	\$ 474,191	\$ 393,866
	\$ 645,676	\$ 652,528

STATEMENTS



North Simcoe Muskoka Hospice Palliative Care Network Statement of Operations and Changes in Net Assets

For the year ended March 31	2017	2016
Revenues		
North Simcoe Muskoka Local Health Integration Network	\$ 1,667,501	\$ 1,616,783
Memberships	480	1,135
Fundraising and donations	136,562	92,180
Grant	-	5,265
Other funding sources and other revenue	116,213	88,788
Amortization of deferred contributions	768	768
	1,921,524	1,804,919
Expenses		
Compensation	1,370,164	1,326,281
Supplies	49,991	59,230
General sundry and equipment	285,567	266,369
Buildings and grounds	55,315	54,657
Amortization	768	768
	1,761,805	1,707,305
Excess of revenues over expenses before transfers	159,719	97,614
Transfers to Hospice Muskoka and Hospice Huntsville	79,392	69,369
Excess of revenues over expenses for the year	80,327	28,245
Unrestricted Fund Balance, beginning of year	393,866	359,785
Transfer from Internally Restricted - Hospice Orillia	-	5,836
Unrestricted Fund Balance, end of year	\$ 474,193	\$ 393,866
Consisting of		
Unrestricted - Palliative Care Network	\$ 332,579	\$ 264,213
Unrestricted - Hospice Orillia	141,612	129,653
	\$ 474,191	\$ 393,866